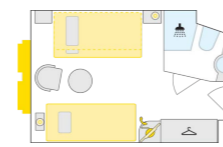


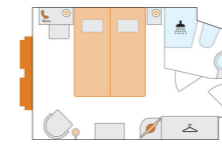
A-ROSA AQUA

IDENTICAL IN
CONSTRUCTION TO
A-ROSA BRAVA

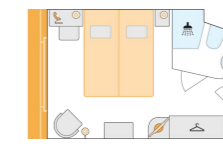
SHIPYARD: Neptun Werft GmbH, Warnemünde
PASSENGERS: max. 202 guests
CABINS: 99 outside cabins per ship
LENGTH/WIDTH: 135 m/11.4 m
SPEED: max. 22 km/h
POWER: 4 x 331 kW, a total of 1,800 PS
YEAR OF CONSTRUCTION: 2009 A-ROSA AQUA,
 2011 A-ROSA BRAVA
FLAG: Germany



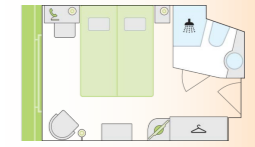
S 2-bed outside cabin with extra bed, 14.5 m², deck 1



A 2-bed outside cabin, 14.5 m², deck 1

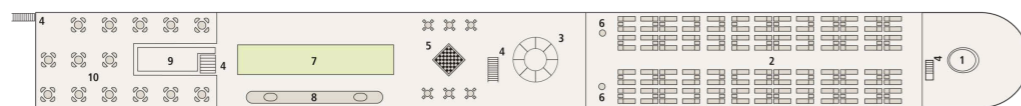


C 2-bed outside cabin with Juliette balcony, 14.5 m², deck 2

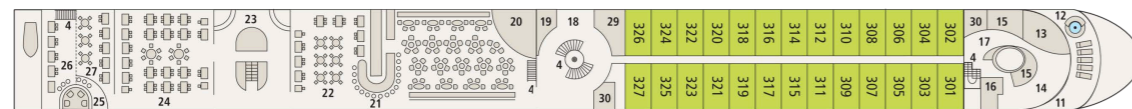


D 2-bed outside cabin with Juliette balcony, 14.5 m², deck 3

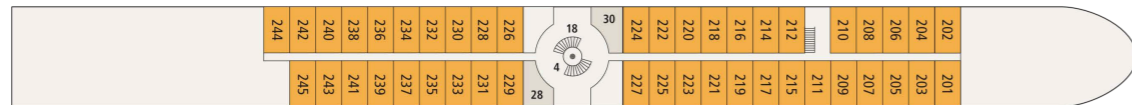
DECK 4



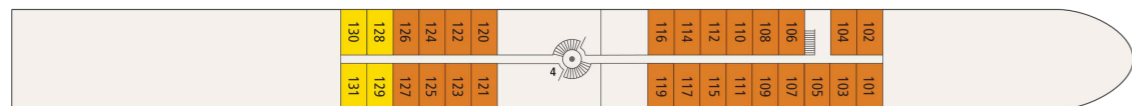
DECK 3



DECK 2



DECK 1



DECK PLAN

- | | | |
|-------------------------------|----------------------------|-----------------------------|
| 01 WHEELHOUSE | 11 SPA OUTDOOR AREA | 21 BAR |
| 02 RECLINERS AND AWNINGS | 12 WHIRLPOOL | 22 CAFE/RESTAURANT |
| 03 LIGHT DOME | 13 GYM | 23 BUFFET WITH LIVE COOKING |
| 04 STAIRS | 14 SPA RELAXATION AREA | 24 MARKET RESTAURANT |
| 05 GIANT CHESSBOARD | 15 MASSAGE/BEAUTY | 25 P'TIT BAR (INDOOR/OUTDOO |
| 06 OUTDOOR SHOWER | 16 SANARIUM | 26 RESTAURANT OUTDOOR ARE |
| 07 PUTTING GREEN/CRAZY GOLF | 17 SPA RECEPTION | 27 WINE BAR |
| 08 SHUFFLEBOARD | 18 LOBBY | 28 RECEPTION |
| 09 MOBILE BAR AND BBQ STATION | 19 EXCURSION COUNTER | 29 SHOP |
| 10 OUTDOOR RESTAURANT | 20 LOUNGE WITH DANCE FLOOR | 30 TOILETS |

The windows can only be opened in the cabin category of 2-bed outside cabin C and D with Juliette balcony.

TIP FOR FAMILIES:

Each deck (cabin category A, C & D) has two cabins available with a connecting door for use as a family cabin. Cabin numbers on request (A-ROSA Service Center, tel. +49 (0)381 202 6001.).

THOSE IN NEED OF ASSISTANCE AND PEOPLE WITH LIMITED MOBILITY:

The decks of this ship are only accessible via stairs, which may mean there are some limitations. For a personal consultation, please call the *A-ROSA Service Center* at +49 (0)381 202 6001.



Experience the ship with our 360° virtual ship tour:
www.rosa-cruises.com/rhineships

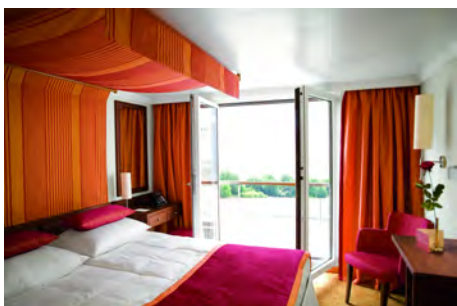
WELCOME ON BOARD

A-ROSA AQUA AND A-ROSA BRAVA



THE BEST WAY TO ESCAPE THE DAILY HUSTLE & BUSTLE: ON BOARD A-ROSA

- Spacious sun deck with relaxed atmosphere
- Plenty of recliners, sunshades and awnings
- Shuffleboard, putting green and giant chess board
- Beverage station on the sun deck
- Panorama Lounge with bar and dance floor
- Casual dress code



RELAX AND LET YOUR PALATE EXPLORE NEW TASTES: OUR CULINARY OFFERINGS

- Indulge all day, every day with Full BoardPlus:
 - Daily varied buffets with live cooking stations
 - Freshly prepared regional and seasonal specialities
 - In the afternoon: cake buffet with coffee and tea
- High-quality non-alcoholic drinks as well as a selection of wine & beer included throughout the day*
- Free choice of tables at the Market and Café Restaurant, the Wine Bar and the outdoor restaurant
- Wine list adapted to the region
- Optional A-ROSA Wine & Dine (at a surcharge): exclusive 4-course seasonal dinner with paired wines
- BBQ buffet on the aft deck (subject to weather conditions)



FEELING AT HOME WHILST ON HOLIDAY: OUR CABINS

- Spacious, comfortable cabins, mainly with Juliette balcony
- Elegant design and high-quality materials provide a feel-good atmosphere
- Amenities: safe, air conditioning, TV, fly screen, hair dryer, shower / vacuum toilet, sauna towel, woolen blanket, telephone, bathrobe on request
- Outside cabins: 14.5 m², some with Juliette balcony



TRULY RELAX WHILE ON HOLIDAY: SPA-ROSA

- Wide range of beauty and body treatments with high-quality products, e.g. THALGO
- Sanarium with panoramic view
- Professionally trained spa and beauty team
- Gym with modern cardio equipment: Elliptical trainer and bicycle ergometer
- Experience showers and relaxation area
- Outdoor area with whirlpool, recliners and panoramic view

*Included for Premium All-Inclusive guests



aROSA 
Cruising differently